



**CONVICTION
ON YOUR
WRIST**

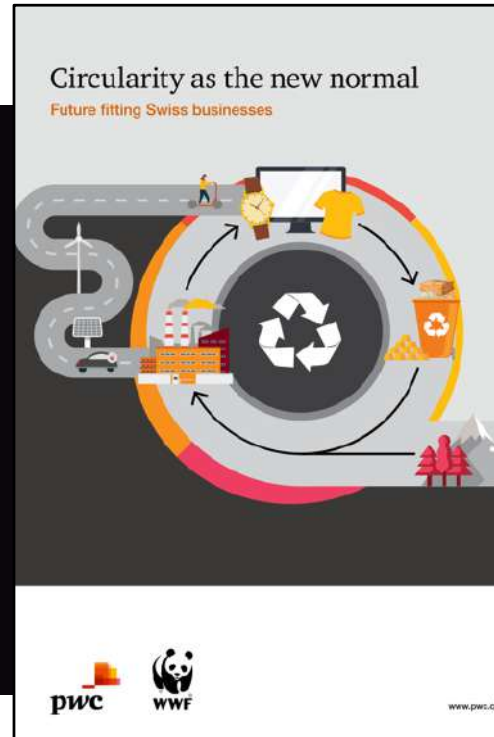
A wide-angle photograph of a massive glacier flowing through a mountain valley. The glacier is covered in dark moraine material and winds through the valley floor. In the background, jagged mountain peaks are visible, some with patches of snow or ice. The sky is a clear, bright blue. The foreground shows rocky, sparsely vegetated slopes. The text 'IMPACT NATIVE' is superimposed in large, white, italicized capital letters across the center of the image.

IMPACT NATIVE

TEAM OF CHANGE MAKERS



THE OPPORTUNITY



SUSTAINABLE

"60% of consumers consider sustainability in their purchasing decision with the most important aspects being ethical sourcing, and the environmental impact of the materials."

Deloitte, 2021

TRACEABLE

"In most cases the companies are not able to demonstrate where their raw materials come from and that they weren't responsible for dramatic environmental degradation and human rights violations."

PWC, 2021

TRANSPARENT

"Most of the major companies in the Swiss watch and jewelry sectors do not seem to care about the environment and are not transparent."

WWF, 2018

CIRCULAR ECO-SYSTEM

Recyclable

Recycled

Respect

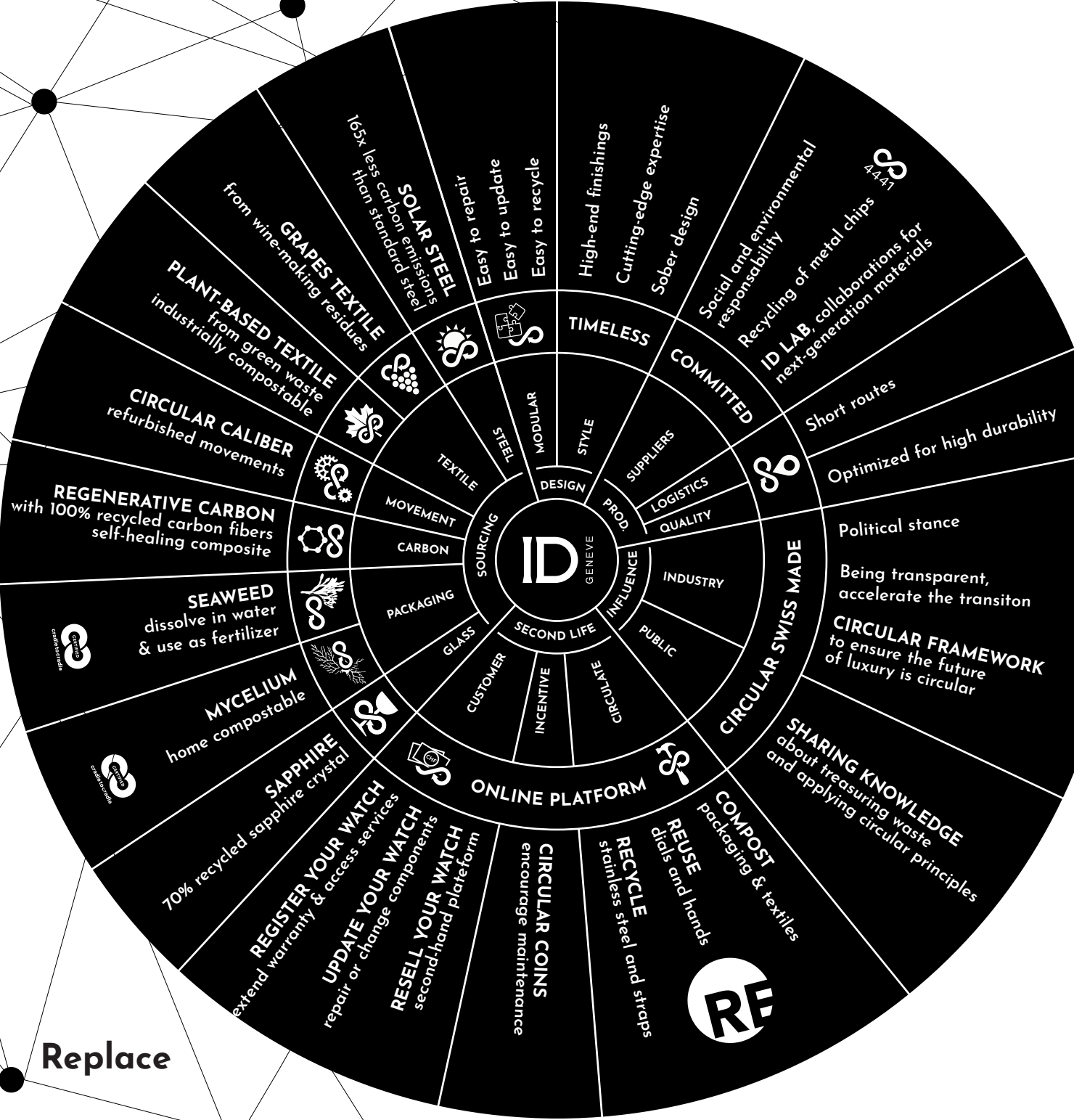
Residue

Reuse

Repair

Replace

RE



CIRCULAR 1



A large yellow excavator is shown in an industrial setting, loading a large pile of dark, granular metal chips into the back of a dark-colored truck. The background shows a large industrial building with a corrugated metal roof.

STEEL REGIONAL NETWORK



Swiss Jura network to collect and sort industry metal chips waste.



CIRCULAR 1

TECHNICAL DESCRIPTION

MOVEMENT: Refurbished Automatic movement ETA 2824

FUNCTIONS: Date, hour, minute and second

CASE: 100% Recycled 4441 stainless steel from Jura

DIAMETER: 41 mm

THICKNESS: 9.65 mm

WATER RESISTANCE: 50 m

DIAL: Steel sunbeam brushing with Luminova steel sticks applied index

GLASS: Front and back sapphire crystal with anti-reflective treatment

STRAP: V-textile strap with stainless steel buckle

100% recycled stainless steel case, its carbon footprint is 10x less impactful than the industry average

Modular/evolutive design, easy to repair/replace

Design: dial is laser engraved & inspired by metallography

Eco-Cork, OEKO-TEX® certified

Wine residue strap





CIRCULAR S





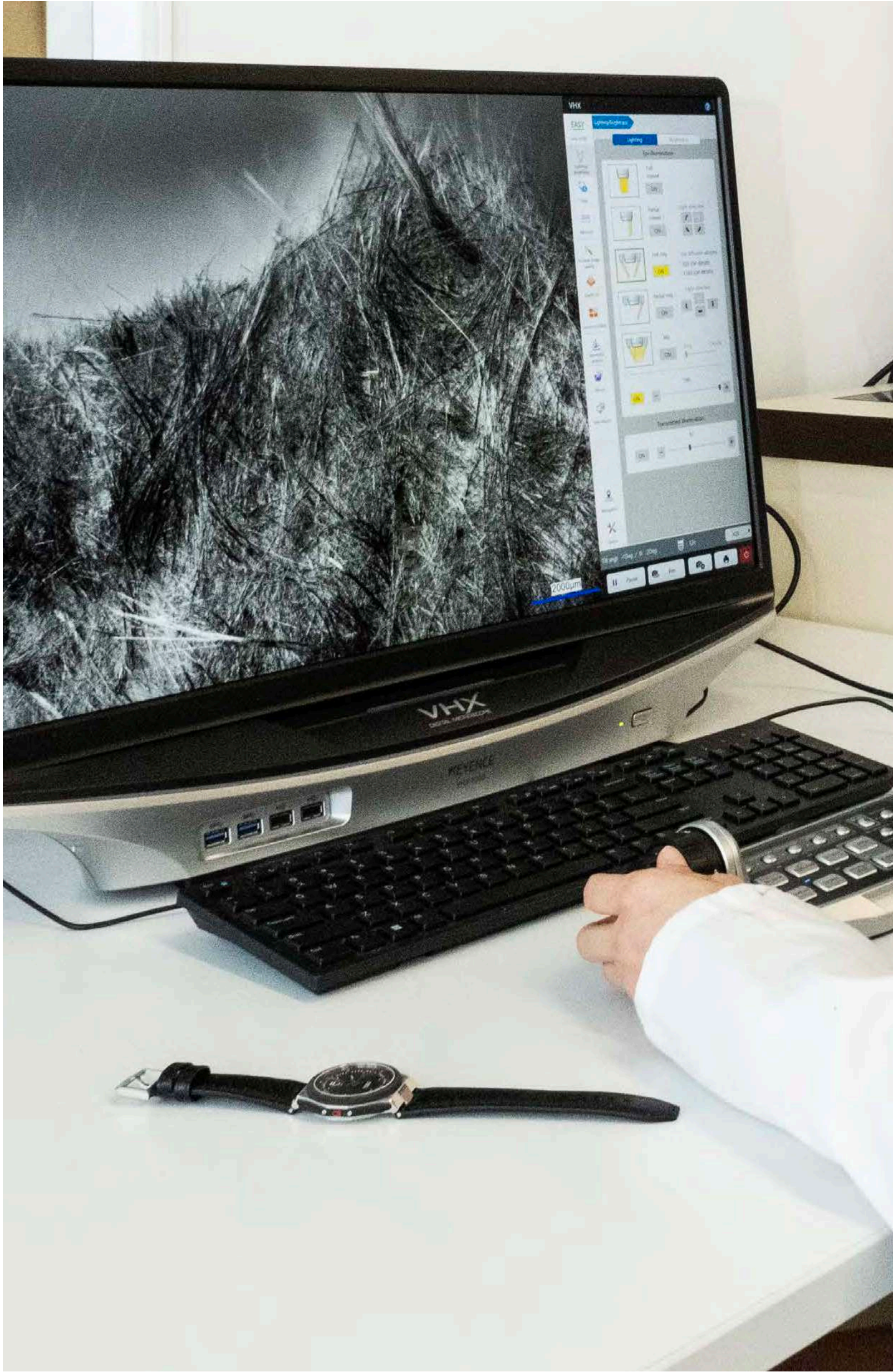
CIRCULAR C



CIRCULAR C COLLECTION

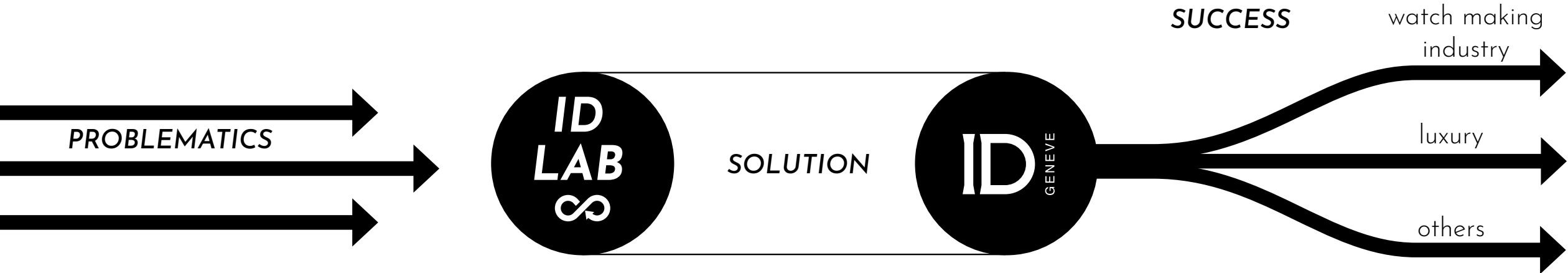
NEW





ELEMENTS





ELEMENTS





COLLECTIONS



CIRCULAR 1



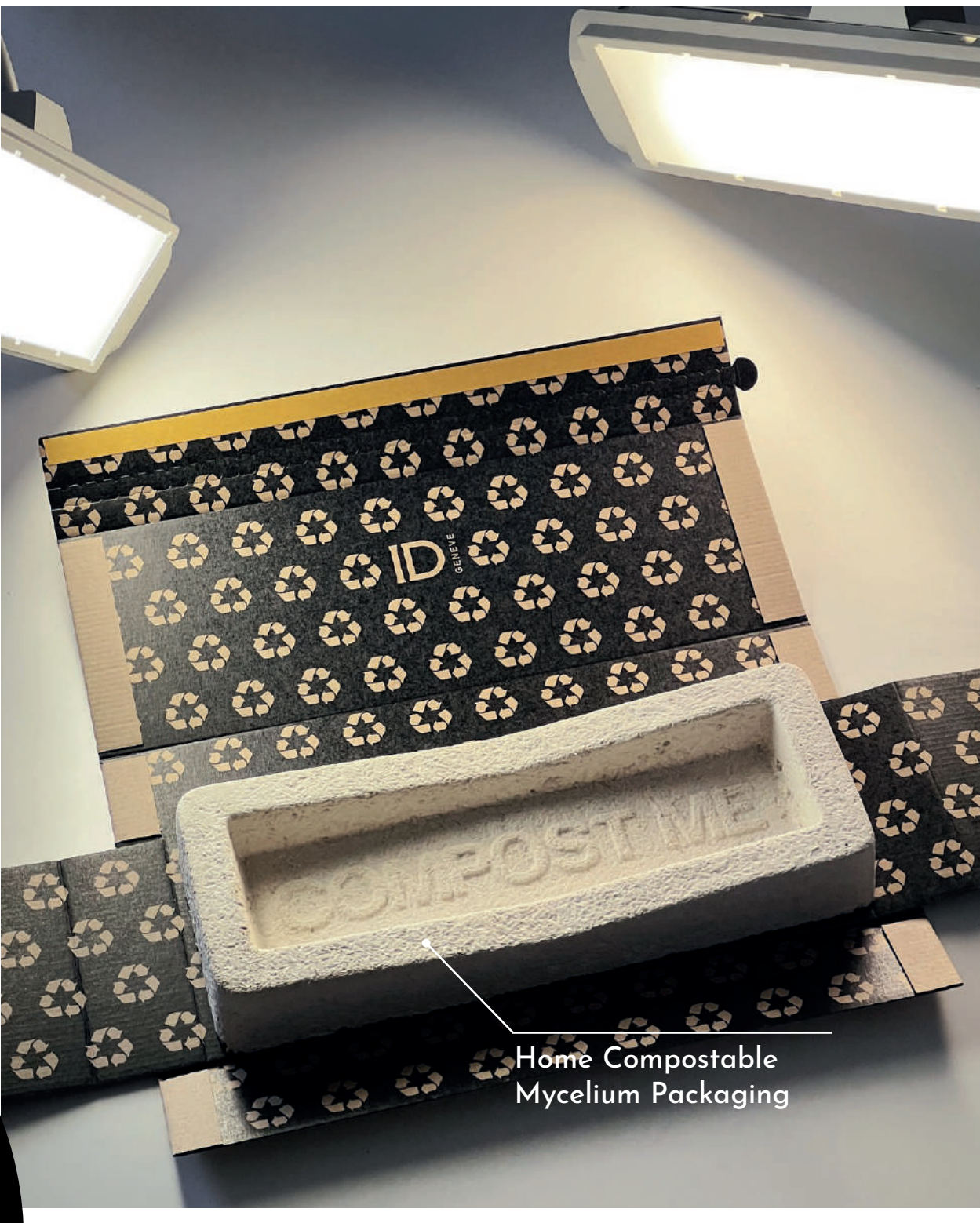
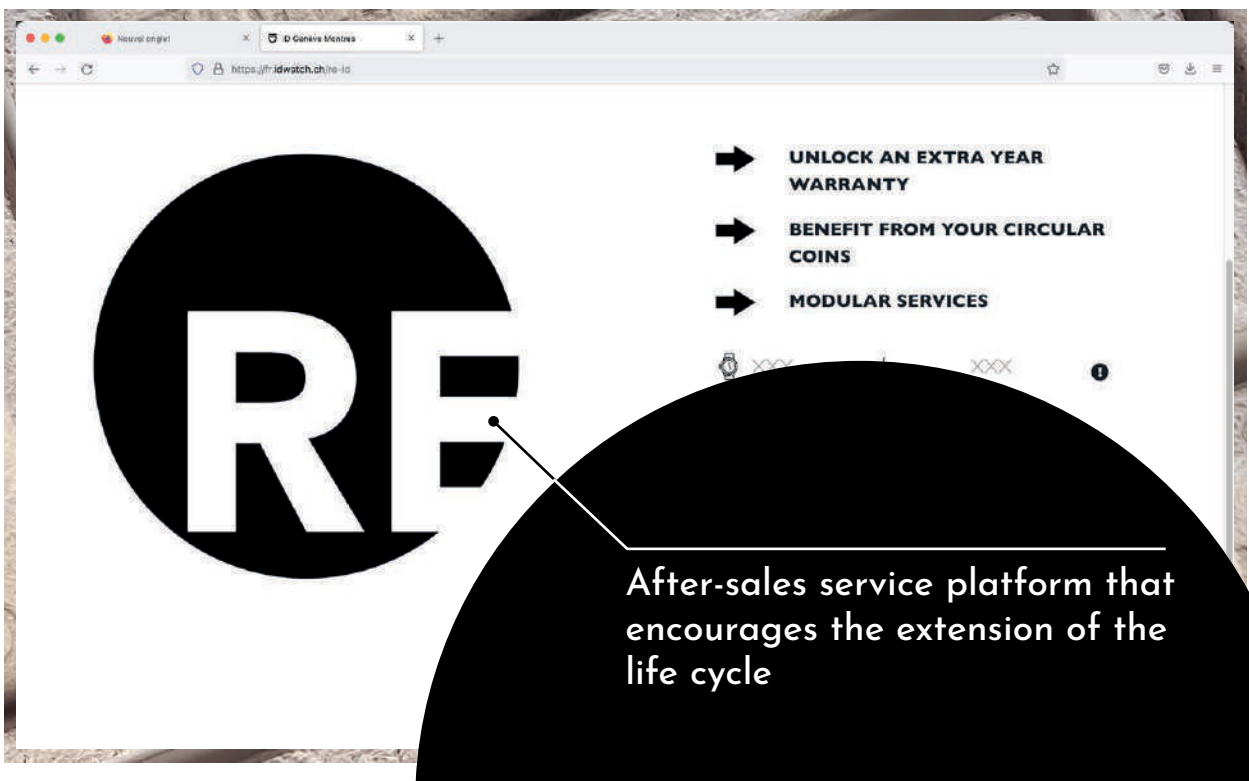
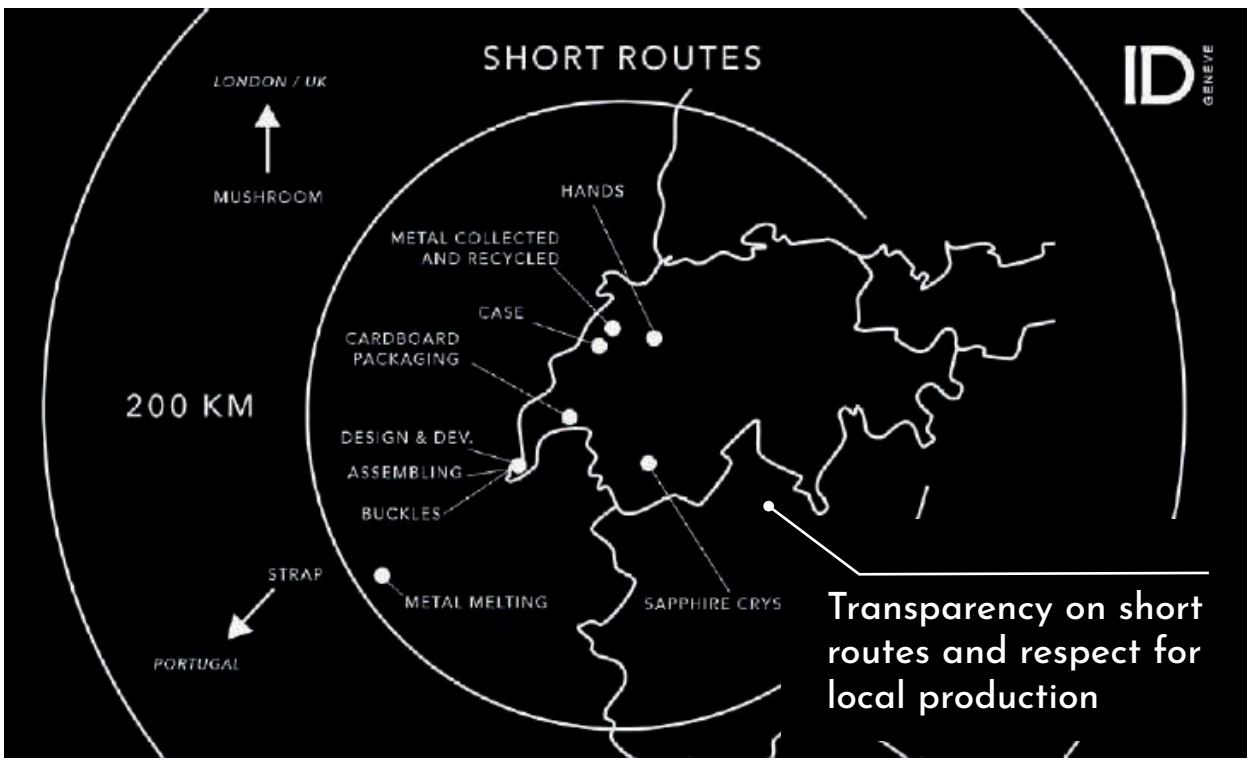
CIRCULAR S



CIRCULAR C



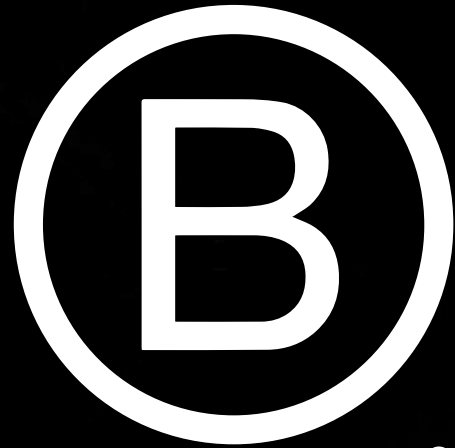
ELEMENTS



1st
SWISS MADE
WATCH BRAND



Certified



®

Corporation







THANK YOU

.

ID WATCH SA
www.idwatch.ch - info@idwatch.ch
Chemin des Merles 1
Genève, Suisse